

ADJUSTABLE COOLANT NOZZLE

특징

- 각도, 길이, 노즐 지름을 쉽게 정리할 수 있습니다.
- 다양한 화학 작용제에 대해 폭넓게 적용할 수 있습니다.
- 화학, 충격, 내열성에 우수합니다.

사양

사용유체	Air, Water, Oil	
재 질	Acetal(POM)	
용 점	165℃	
사용온도범위	32~158°F	0~70℃

유량

Type	Pressure(kg/cm ²)	Flow Rates(L/hr)
1/4" System	2~3.5	900
3/8" System	2~3.5	1,500
1/2" System	1.5~2.5	1,800
3/4" System	0.7~1.4	1,900



주문형식

JC 1/4" 02

① ② ③

① 형식(Type)

② 호스의 규격

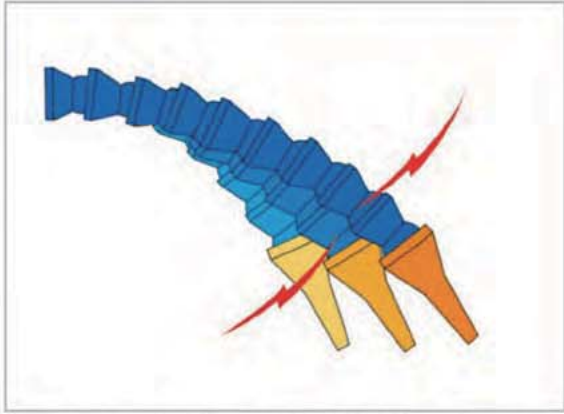
	Inch Size			
Code	1/4"	3/8"	1/2"	3/4"
Dia	Ø1/4	Ø3/8	Ø1/2	Ø3/4

③ 나사의 크기

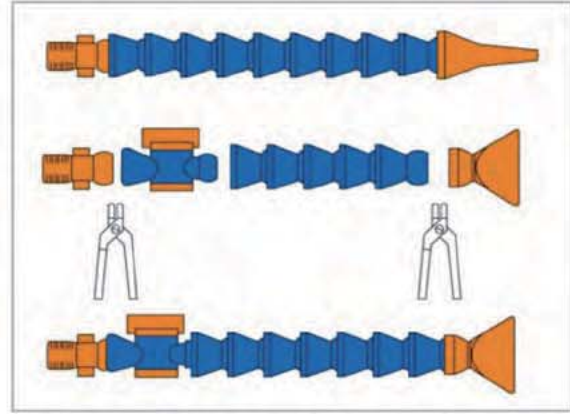
	Taper Pipe Thread			
Code	01	02	03	04
Size	R1/8	R1/4	R3/8	R1/2

Etc

Adjustable Coolant Nozzle



각도가 세팅되면, 다시 반동(회복)되지 않음.



조립용 플라이어로 어떤 배열로도 연결할 수 있음.

▼조립시 사이즈 계산방법



피팅 + 호스 + 노즐 = 총 길이
(A) (BX수량) (C)

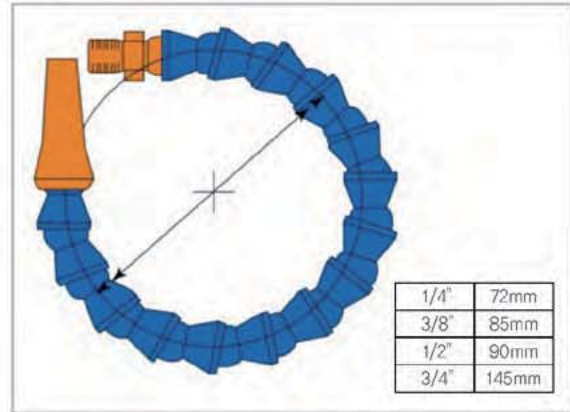
1/4" 20.5mm + 15mm × 수량 + 30mm = 총길이
(83025611) (83015600) (83035600)

3/8" 25mm + 17.5mm × 수량 + 33mm = 총길이
(83026013) (83016000) (83036002)

1/2" 29.5mm + 21.5mm × 수량 + 38mm = 총길이
(83026214) (83016200) (83036203)

3/4" 30mm + 23.5mm × 수량 + 43mm = 총길이
(83026716) (83016700) (83036706)

▼조립시 사이즈 계산방법



▼화학 작용제와의 호환성

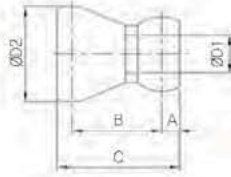
화학약품	적합/부적합	화학약품	적합/부적합
용제	○	비료	○
윤활유	○	아세톤	○
유압유	○	벤젠	○
브레이크 오일	○	피마자유	○
석유제품	○	인산	×
세정제	○	염산	×
농약	○	과산화수소	×
제초제	○	황산	×
살충제	○	하이포아염소산	×

사용예



JH

Hose

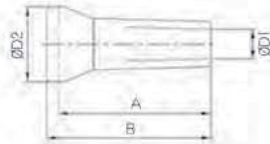


호스

CODE	MODEL	ØD1	ØD2	A	B	C	Q' ty/ Inbox
83015600	JH 1/4	6.3	16	3	15	20.5	200
83016000	JH 3/8	9.5	21	4.6	17.5	25	112
83016200	JH 1/2	12.7	25	5.5	21.5	30.5	60
83016700	JH 3/4	19	31	5.5	23.5	33.5	30

JN

Nozzle

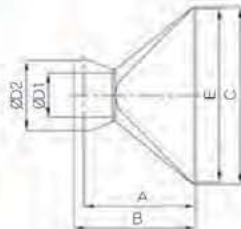


원형노즐

CODE	MODEL	ØD1	ØD2	A	B	Q' ty/ Inbox
83035600	JN 1/4-1/16	1.5	16	27.5	30	100
83035601	JN 1/4-1/8	3.2	16	27.5	30	100
83035602	JN 1/4-1/4	6.3	16	32.5	35	100
83036002	JN 3/8-1/4	6.3	21	30	33	20
83036003	JN 3/8-3/8	9.5	21	36	39	20
83036004	JN 3/8-1/2	12.7	21	30	33	20
83036202	JN 1/2-1/4	6.3	25	34.5	38	50
83036203	JN 1/2-3/8	9.5	25	34.5	38	50
83036204	JN 1/2-1/2	12.7	25	34.5	38	50
83036705	JN 3/4-5/8	15.9	31	38.5	43	20
83036706	JN 3/4-3/4	19.5	31	38.5	43	20

JNF

Flare Nozzle



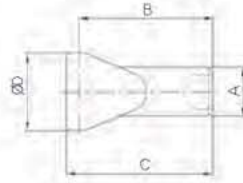
납작노즐

CODE	MODEL	ØD1	ØD2	A	B	C	E	Q' ty/ Inbox
83155608	JNF 1/4-1"	6.3	16	23.5	26	27	25.4	25
83156010	JNF 3/8-1 1/4	9.5	21	36	39	34	32	20
83156210	JNF 1/2-1 1/4	12.7	25	38	42.5	35	32	20
83156214	JNF 1/2-1 3/4	12.7	25	47	50.5	48	44.5	20
83156220	JNF 1/2-2 1/2	12.7	25	47	50.5	66.5	63.5	20
83156724	JNF 3/4-3"	19.5	31	49.5	54	78	76.2	10

Adjustable Coolant Nozzle

JNFS

Flat Slot Nozzle

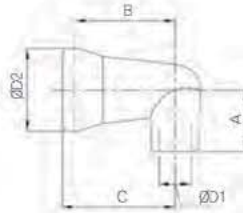


납작제트노즐

CODE	MODEL	ØD	A	B	C	Q' ty/ Inbox
83165600	JNFS 1/4 7mm	16	10	27.5	30	25

JNL

90° Nozzle

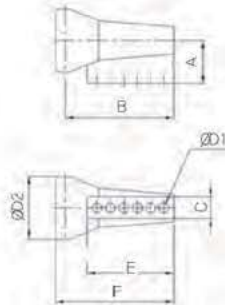


직각원형노즐

CODE	MODEL	ØD1	ØD2	A	B	C	Q' ty/ Inbox
83175600	JNL 1/4-1/16	1.6	16	12	19.5	22	100
83175601	JNL 1/4-1/8	3.2	16	12	19.5	22	100
83175602	JNL 1/4-1/4	6.3	16	12	19.5	22	100
83176202	JNL 1/2-1/4	6.3	25	18	26.5	30	50
83176203	JNL 1/2-3/8	9.5	25	18	26.5	30	50
83176204	JNL 1/2-1/2	12.7	25	18	26.5	30	50

JNSL

90° Spray Nozzle



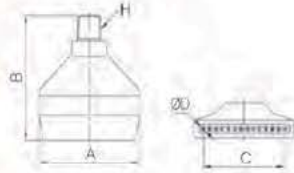
직각스프레이바노즐

CODE	MODEL	ØD1	ØD2	A	B	C	E	F	Q' ty/ Inbox
83195600	JNSL 1/4	2.5	16	11	27.5	5.5	22	30	100

Etc

JNS

Spray Nozzle

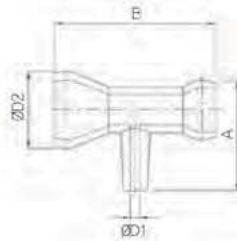


스프레이노즐

CODE	MODEL	ØD	A	B	C	H	Q' ty/ Inbox
83185600	JNS 1/4-01	1	40	50	32.5	R1/8	25
83185602	JNS 1/4-02	1	40	50	32.5	R1/4	25

JNT

T Nozzle

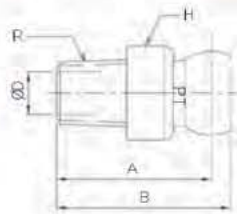


사이드분사노즐

CODE	MODEL	ØD1	ØD2	A	B	Q' ty/ Inbox
83205600	JNT 1/4	2	16	23.2	34	20
83206200	JNT 1/2	3.5	25	30.7	48	20

JC

Connector



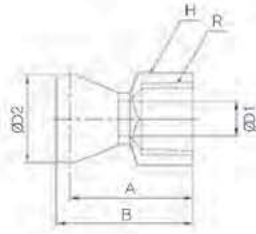
숫나사커넥터

CODE	MODEL	ØD	A	B	H	R	Q' ty/ Inbox
83025611	JC 1/4-01	6.3	23	26	14	R1/8	100
83025612	JC 1/4-02	6.3	23	26	14	R1/4	100
83026013	JC 3/8-03	9.5	27.5	32	19	R3/8	50
83026014	JC 3/8-04	9.5	27.5	32	21	R1/2	50
83026213	JC 1/2-03	12.7	33	38.5	19	R3/8	50
83026214	JC 1/2-04	12.7	33	38.5	22	R1/2	50
83026716	JC 3/4-06	19.5	34.5	40	28	R3/4	20

Adjustable Coolant Nozzle

JCF

Female Screw connector

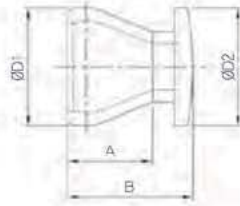


암나사커넥터

CODE	MODEL	ØD1	ØD2	A	B	H	R	Q' ty/ Inbox
83065622	JCF 1/4-02	6.3	16	22.5	25	17	R1/4	20

JCAP

Sealing Cap

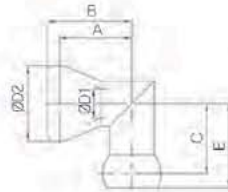


엔드캡

CODE	MODEL	ØD1	ØD2	A	B	Q' ty/ Inbox
83055600	JCAP 1/4	16	16	11.5	17	20

JL

L Fitting

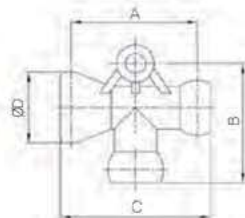


엘보피팅

CODE	MODEL	ØD1	ØD2	A	B	C	E	Q' ty/ Inbox
83145600	JL 1/4	6.3	16	15.5	18	15	18	20
83146200	JL 1/2	12.7	25	22.5	26	19.5	25	20

JT

T Fitting



T피팅

CODE	MODEL	ØD	A	B	C	Q' ty/ Inbox
83125600	JT 1/4	16	28.5	27	34	20
83126200	JT 1/2	25	41	40	50	20

Etc

JY

Y Fitting

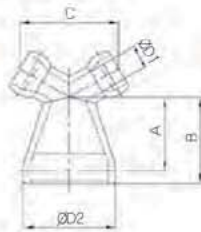


Y-피팅

CODE	MODEL	ØD1	ØD2	A	B	C	Q' ty/ Inbox
83135600	JY 1/4	6.3	16	13	15.5	21.7	20
83136200	JY 1/2	12.7	25	20	23.5	42.5	20
83136700	JY 3/4	19.5	31	24	28.5	48.5	10

JRY

Reducing Y Fitting

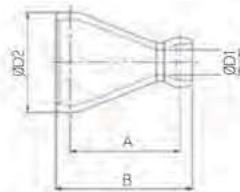


Y형 레듀사 피팅

CODE	MODEL	ØD1	ØD2	A	B	C	Q' ty/ Inbox
83106202	JRY 1/2-1/4	6.3	25	20	23.5	27	20
83106704	JRY 3/4-1/2	12.7	31	24	28.5	45	10

JR

Adapter

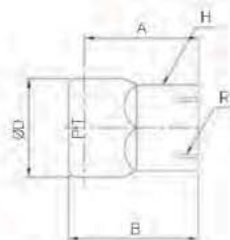


레듀사 어댑터

CODE	MODEL	ØD1	ØD2	A	B	Q' ty/ Inbox
83096202	JR 1/2-1/4	6.3	25	27.5	34	20
83096704	JR 3/4-1/2	12.7	31	29	39	10

JSF

Female Screw Sockets



PT암나사소켓

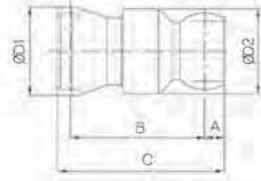
CODE	MODEL	ØD	A	B	H	R	Q' ty/ Inbox
83115621	JSF 1/4-01	16	18.5	21	14	R1/8	20

Etc

Adjustable Coolant Nozzle

JCV

In-Line Check Valve

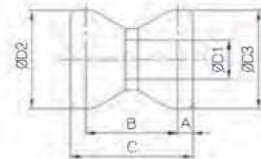


체크밸브

CODE	MODEL	$\varnothing D1$	$\varnothing D2$	A	B	C	Q' ty/ Inbox
83075800	JCV 1/4	16	21	3	36.5	42	20
83076200	JCV 1/2	25	24	5.5	38	47	20

JDS

Double sockets

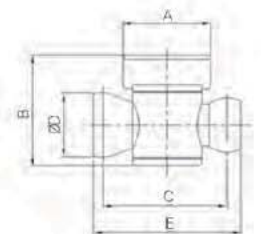


더블소켓

CODE	MODEL	$\varnothing D1$	$\varnothing D2$	$\varnothing D3$	A	B	C	Q' ty/ Inbox
83085800	JDS 1/4	6.3	16	16	2.5	30	40	20
83086200	JDS 1/2	12.7	25	25	3.5	25	32	20

JV

In-Line valve

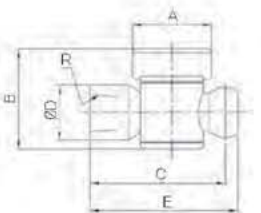


중간밸브

CODE	MODEL	$\varnothing D$	A	B	C	E	Q' ty/ Inbox
83215800	JV 1/4	16	27	30	30	36	20
83216200	JV 1/2	25	34	43	48.5	57	20

JVF

Valve female screw



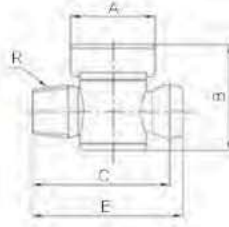
PT암나사밸브

CODE	MODEL	$\varnothing D$	A	B	C	E	R	Q' ty/ Inbox
83225822	JVF 1/4-02	16	27	30	42	45	R1/4	50
83226224	JVF 1/2-04	24	34	43	56.5	62	R1/2	20

Etc

JVM

Valve male screw

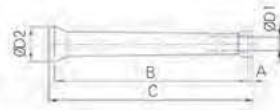


PT숫나사밸브

CODE	MODEL	A	B	C	E	R	Q' ty/ Inbox
83235612	JVM 1/4-02	27	30	41	44	R1/4	50
83236013	JVM 3/8-03	25	34	44.5	49	R3/8	15
83236214	JVM 1/2-04	34	43.2	55.9	61.4	R1/2	20

JHL

Long hose

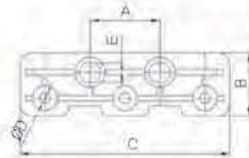


연장호스

CODE	MODEL	ØD1	ØD2	A	B	C	Q' ty/ Inbox
83045600	JH 1/4L	6.3	16	3	90	95.5	25
83046200	JH 1/2L	12.7	25	5.5	88	97	20

JMB

Manifold Brackets



매니폴드 브라켓

CODE	MODEL	ØD1	A	B	C	E	Q' ty/ Inbox
83255600	JMB 1/4	3.8	24.5	22	73.7	6.7	10
83256200	JMB 1/2	3.5	40	23	100	6.5	10

Etc

Adjustable Coolant Nozzle

JMS

Total Flow Control Manifold Kit



모듈시스템

CODE	MODEL	Q ' ty/Inbox
83285600	JMS 1/4	3
83286200	JMS 1/2	3

JMSV

Total Flow Control Manifold Kit



메인모듈시스템

CODE	MODEL	Q ' ty/Inbox
83275600	JMSV 1/4	2
83276200	JMSV 1/2	5

JHD

Hose Drum



호스드럼

CODE	MODEL	Q ' ty/Drum
83245600	JHD 1/4	1,015
83246000	JHD 3/8	868
83246200	JHD 1/2	701
83246700	JHD 3/4	645

JP

Assembly Tool



조립용 플라이어

CODE	MODEL	Q ' ty/Inbox
83285600	JP 1/4	10
83286000	JP 3/8	10
83286200	JP 1/2	10
83286700	JP 3/4	10

Etc